

MP300 Code no. 121.70.094

SPEAK-THROUGH SYSTEM

The MP 300 speak-through system has been expressly designed for facilitating conversation between personnel and customers separated by a glass security window which prevents sound transmission.

With the MP 300, conversation is carried out naturally, without the need for pushing buttons or using telephone units. A number of special functions, such as direct or switched mode selection and the “forced volume” function, make it possible to adapt the system to various environments and noise levels. The system is composed of the MP 341 amplification and control unit, the MP 321 operator microphone, the MP 302 user microphone, and the MP 301 speakers. The individual components can also be

purchased separately on request:

- MP 341 amplification and control unit - Code no. 124.01.005
- MP 321 operator microphone Code no. 124.01.008
- MP 302 user microphone Code no 124.01.007
- MP 301 speaker Code no. 124.01.006

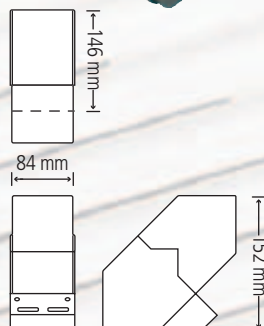
MP321

OPERATOR POSITION MICROPHONE UNIT

The MP 321 consists of a condenser microphone with excellent directional features, contained in an anthracite grey die-cast aluminium alloy enclosure which is protected by a stove-enamelled stainless steel grille.

The attractive design and reduced dimensions make the MP 321 easy to integrate into any space. The base is equipped with two buttons for activating the operator-user and the user-operator lines.

A LED indicates which line is activated. The controls can be duplicated for remote control (e.g. by means of a pedal switch).



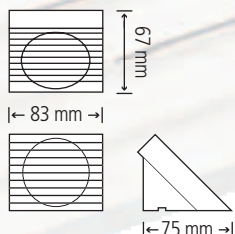
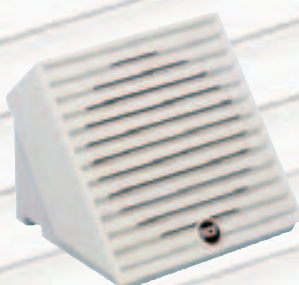
MP301

SPEAKERS

The MP 301 speakers must be installed in proximity to the user and operator positions.

Made of white plastic, the MP 301 incorporates a 70 mm loudspeaker that has been specially designed for reproducing the voice with excellent intelligibility.

Attractive and compact, the MP 301 speakers can be attached using the heavy-duty double-face tape supplied. A 5 m flat bipolar cable is also provided for connection to the control unit and MP 341 amplifier.



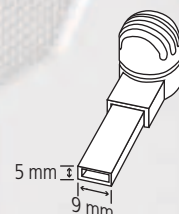
MP302

USER POSITION MICROPHONE UNIT

The MP 302 is a condenser microphone characterized by high sensitivity and directivity, specially designed for clear voice reproduction even in very noisy environments.

The compact white plastic enclosure has a very sleek contemporary design.

The MP 302 has a special slot near the screened cable outlet for inserting the raceway (see drawing). The microphone is easy to attach to glass security windows using the heavy-duty double-face tape supplied, and is supplied with 5 metres of screened cable for connection with the MP 341 amplification and control unit.



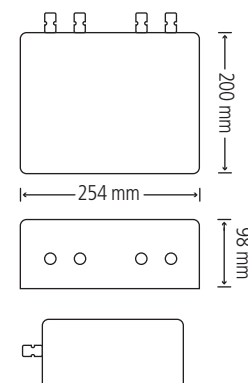
MP341

AMPLIFICATION AND CONTROL UNIT

The MP 341 unit is the heart of the MP 300 system and incorporates all the circuitry necessary for handling the signals coming to and from the operator and user positions (operator phonic line and user phonic line). Four switches inside the MP 341 unit, with corresponding LEDs, are used for setting the 4 different operating modes according to the intensity of noise in the operator position and the user position. A switch for each line makes it possible to select the “direct” function in which the line is always activated, or the “switched” mode, in which the line is activated at the moment of speaking. When both lines are in switched mode, a special circuit activates one line at a time. The two remaining switches are for “forced volume” activation of each line, a function that is useful when a higher volume (+10 dB) is necessary for speaking or listening.

Using the MP 341 control unit, it is also possible to adjust the listening volume of each position independently, as well as the switching threshold for each microphone (factory preset).

The MP 341 enclosure in plastic is ideal for wall installation like any normal electrical system component. The unit can be supplied from the mains at 110/220 Vac - 50/60 Hz, or by 12 Vdc battery.



SPECIFICATIONS

Operator microphone	Electret - Unidirectional
User microphone	Electret - Unidirectional
Amplifier power	2 W (each line)
Supplementary speaker	1 W - 8 Ω
Power supply	Mains: 110/220 Vac - 50/60 Hz
Battery:	12 Vdc
MP 341 control unit dimensions	254 x 200 x 98 mm
MP 341 control unit weight	1,4 Kg
MP 321 microphone overall size	84 x 152 x 146 mm
MP 321 microphone weight	0,8 Kg
MP 301 speaker overall size	83 x 67 x 75 mm
MP 301 speaker weight	120 g
MP 302 microphone dimensions	Ø 16 x 21 mm
MP 302 microphone weight	3,5 g