

## KEY FEATURES

- 2-way compact speaker system
- two 8" carbon fiber woofers
- horn loaded 1" compression driver
- 90° x 75° modified constant directivity horn
- LICC (Low Impedance Compensated Crossover) network
- driver dynamic protection
- two Speakon NL4MP input connectors
- trapezoidal box shape
- 19 mm multilayered birch box construction
- black scratchproof paint finishing
- metal protective grille
- M10 & M8 suspension inserts  
(to be used with PA-A7 and PA-A8 optional accessory, or Omnimount 100 series)

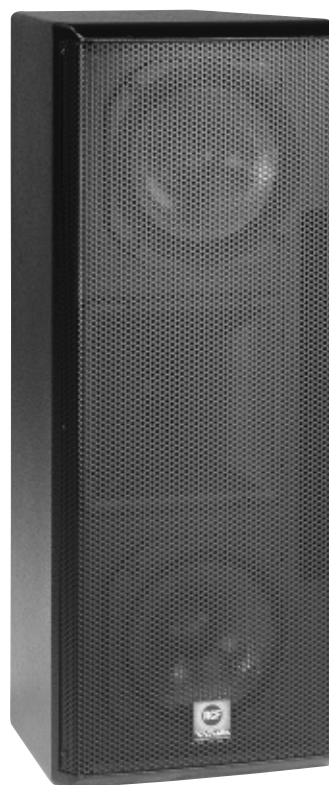
## DESCRIPTION

The PA 281 VISION speaker system, thanks to its 1" compression driver loaded on a modified constant directivity horn, is particularly suitable for primary sound reinforcement (for pubs, restaurants, multimedia studios...), under-balcony applications (theatres, venues, live-clubs...), or delayed sound lines for difficult acoustical environment (sport venues, commercial centres, houses of worship...). The specific electroacoustic project have been optimized in order to achieve an high intelligibility even in the most difficult environment situations. Finally, double carbon-fiber 8" LF drivers make the PA281 suitable even for difficult climatic environments.

LICC advanced crossover network ensures the lowest phase rotation possible in a passive network, using low inductance values with the best transient response.

The box, made in 19 mm multilayered birch finished with black scratchproof paint, is ready to be suspended via M10 inserts, using our optional wall mounting bracket PA-A7, or via M8 inserts using a world-standard Omnimount 100 series standard accessory (not provided).

A standard 35 mm stand could be used in conjunction with our PA-A8 adaptor.



## TECHNICAL DATA

### ELECTROACOUSTIC SPECIFICATIONS

Tipology	2-way bass reflex speaker system
RMS power handling	300 W
Peak power handling	1200 W
Nominal Impedance	4 Ohm
Transducers	LF: 2 x 8" carbon fiber woofers with 2" voice coil HF: 1" compression driver with 1"3/4 voice coil
HF Horn type	modified constant directivity
Coverage pattern (-6 dB)	90° x 75°
Frequency Response (±3 dB)	65 Hz - 18 kHz
Sensitivity (1W / 1mt)	92 dB
Max SPL (1 mt)	119 dB
Crossover	2.1 kHz
HF protection	dynamic
Connectors	two NL4MP Speakon

### CABINET SPECIFICATIONS

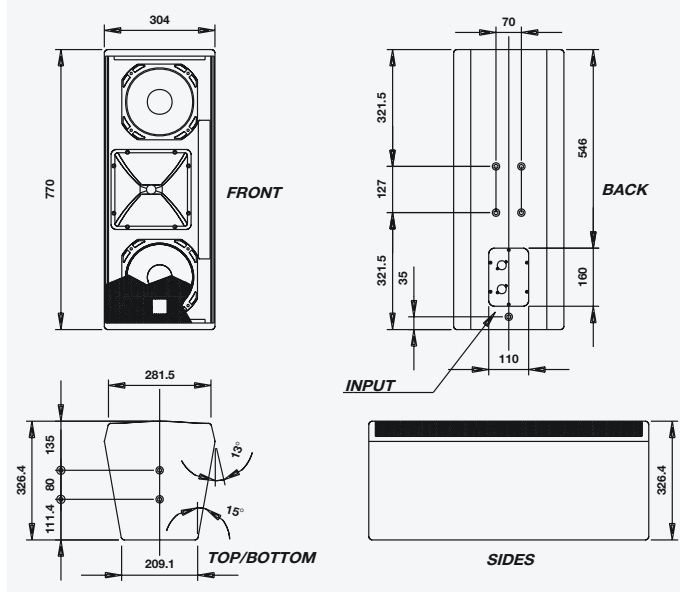
Wood	19-mm multilayered birch
Finishing	black scratchproof painting
Rigging hardware	5 x M10 - 4 x M8 insert points
Dimensions (H x W x D)	770 x 304 x 327 mm
Internal volume	47 l
Net weight	23 kg

**VISION PA 281**

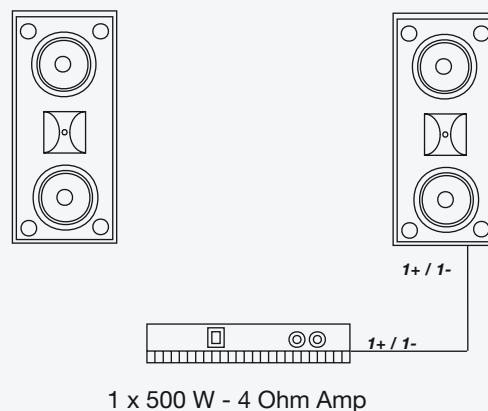
**Ordering code 131.10.185**



## DIMENSIONAL DRAWING



## STANDARD SETUP



## OPTIONAL ACCESSORIES

<b>PA-A1</b>	standard M10 fish-eye with customized adaptor	ordering code 133.20.096
<b>PA-A7</b>	adjustable mounting bracket	ordering code 133.20.019
<b>PA-A8</b>	35 mm stand mounting adaptor	ordering code 133.20.020
<b>DP 260</b>	2-in 6-out 20 bit digital speaker management system	ordering code 121.70.001

## VISION 281 APPLICATION GUIDE

- Auditoriums
- Convention Centres
- A/V presentation
- Vocal-only reinforcement
- Houses of worship
- Theaters



A MACKIE DESIGNS INC. COMPANY [www.mackie.com](http://www.mackie.com)

**RCF S.p.A.**

Via G. Ferraris 2 • 42029 S. Maurizio (Reggio Emilia) • ITALY • Tel. +39 0522.354111 • Fax +39 0522.551875  
 Internet: <http://www.rcf.it> • E-mail: [rcfspa@rcf.it](mailto:rcfspa@rcf.it)