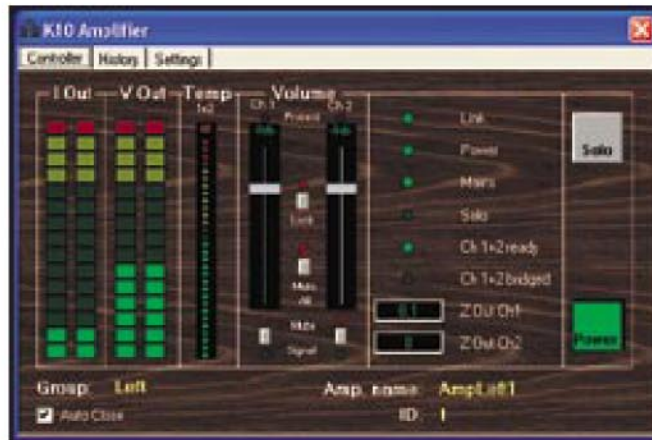


Remote control & Monitoring

The **Power Control System** allows the building of a network of Powersoft amplifiers equipped with data port. The system is suited to a wide range of installed and live applications. Using a standard PC it is possible to perform real-time control and monitoring in reliable and flexible way. The PowerControl System network is based on the RS485 connection.

The Power Control System is composed of:

- At least one Powersoft amplifier equipped with data port and Power Control Module, (the maximum number of amplifiers connected to the network is 99)
- A Power Control Hub.
- A PC with Microsoft Windows 9x/NT/2000/ME/XP operating system, a standard serial RS232 interface and Power Control Manager software installed.



Remote control amplifier panel

Each amplifier needs its own Power Control Module interface card mounted inside the unit and the RJ-45 connector for RS485 network.

Power Control Module is built-in the DIGAM K series Powersoft amplifiers and available as optional plug-in board in Q, D, and QTU series. The Power Control Module saves critical events on an internal memory with date and time and the total working hours.

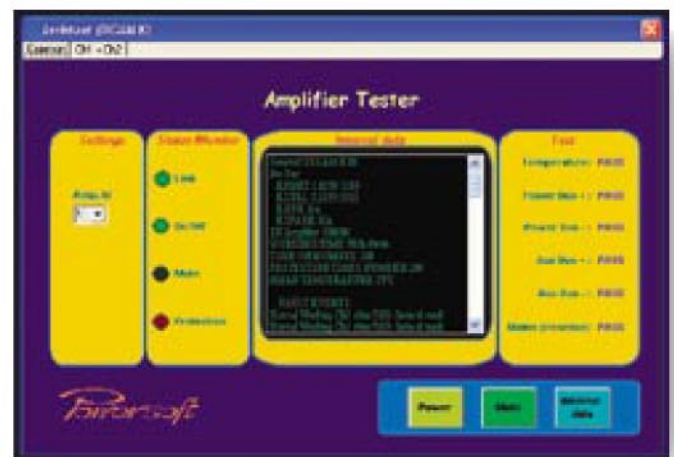
Amplifiers must be connected to a Power Control Hub via the RJ-45 connector and Cat.5 UTP wire. The network is designed to work over a distance of up to 500m. Each Power Control Hub accepts up to 16 amplifier connections. Hubs can be linked up to a maximum number of 99 networked amplifiers.

The PC must be connected to the Power Control Hub through a RS232/RS485 converter and cable.

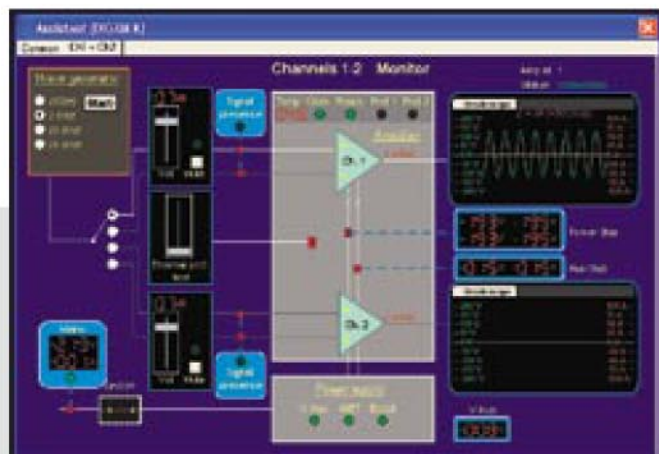
Power Control Manager (PCM) software application can monitor input signal, output voltages, internal temperatures, CLIP and FAULT indications. Control of level and mutes is provided. Presets make it easy to globally change amplifier group output levels and mutes in realtime.

To monitor the system functions from remote, Power Control Manager can be programmed to send automatically (at fault occurrences or periodically) SMS messages via GSM network (GSM modem needed) or via e-mail (internet connection needed) to inform the support center about the problem in real time.

Moreover Power Control Manager offers the opportunity to have an easy guide to test amplifiers locally or remotely connected providing an automatic diagnosis through a built-in Tester Analyzer. The unit also allows the download of all working historical events stored on Power Control Modules memory.



Downloadable events log file



Built-in bench test/diagnostic facility

Remote control features:

Monitoring of: Short-circuit protection, Input level, Output level, Mains presence, Internal temperature, Remote connection, Ready, Signal presence, load impedance for DIGAM-K series.

On/Off scheduler

Alarm Alerting: Automatic dispatching of SMS/GSM messages, automatic dispatching of email messages

Commands: On/Off, Mute control, Reset, Gain control, Signal level metering, Solo control

Test functions: Internal temperature protection, Power/Aux voltage monitor, System clock presence, Signal generation, Output signal acquisition, Download amplifier log file