

ROUND CO-AXIAL METAL CEILING LOUDSPEAKERS



• RCS5/TCOAX • RCS5/FTSCOAX Technical Specifications

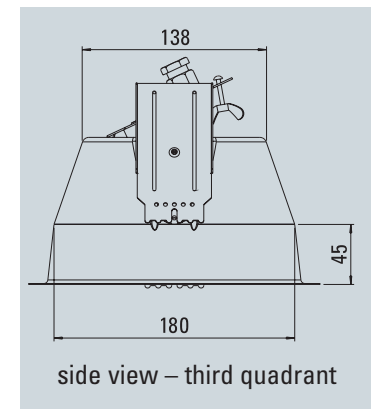
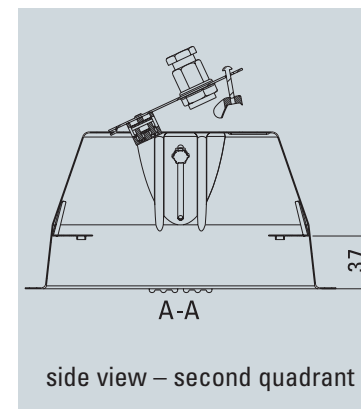
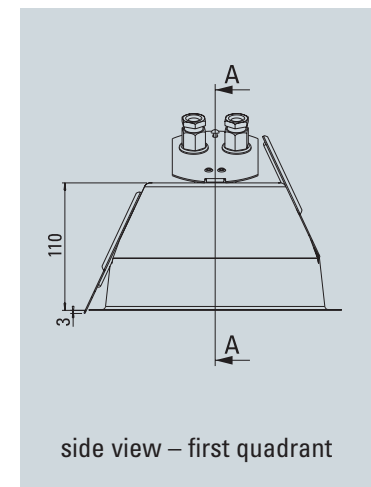
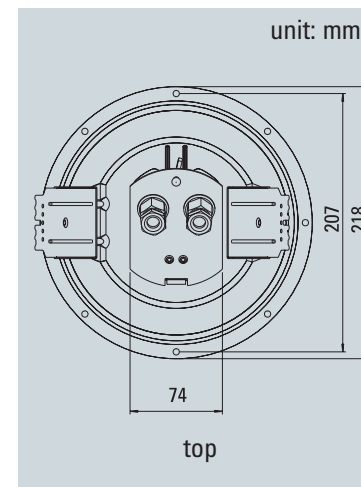
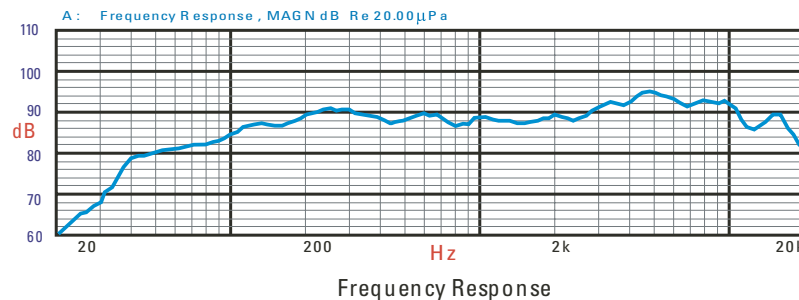
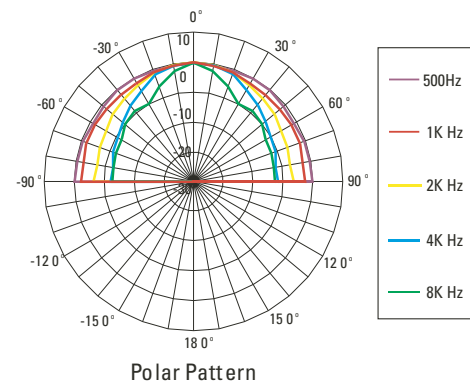
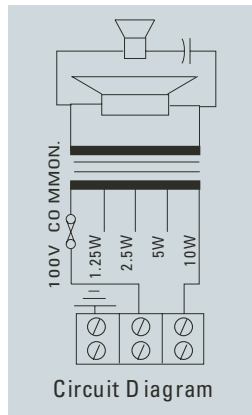
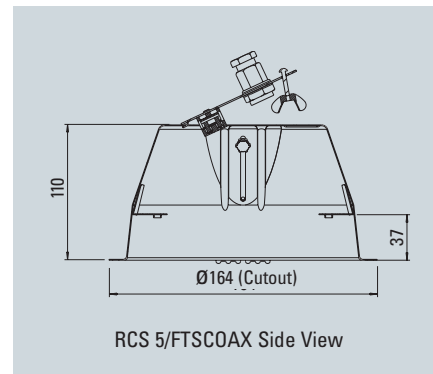
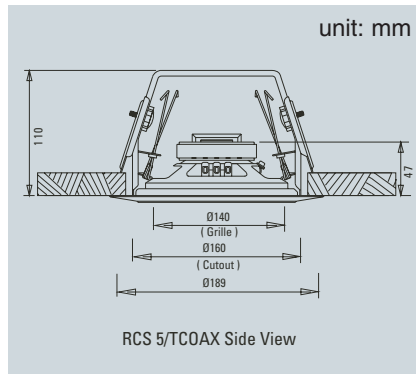
Rated power, Watts	10
Tappings 100 volt line, Watts	10/5/2.5/1.25
Transformer Impedance, Ohms, 100V	1k/2k/4k/8k
Tappings 70.7 volt line, Watts	5/2.5/1.25/0.625
Driver impedance, Ohms	8
Effective frequency range, Hz (BS6840)	80–20,000
S.P.L. @ 1m, 1 watt, dB, Test Signal Bandwidth 100 Hz-10 kHz	91
S.P.L. @ Full power Octave Bandwidth, dB	101
Acoustic Power (dB-PWL@1 watt) 1 k/2kHz, dB	88 / 86
Dispersion at 1k/2kHz, Degrees	RCS5/TCOAX: 180/180 RCS5/FTSCOAX: 180/160
Directivity Axial Q factor, 1k/2kHz	RCS5/TCOAX: 2.1/4.0 RCS5/FTSCOAX: 2.0/5.3
Dimensions, diameter, mm	Ø189
Net weight, Kgs	RCS5/TCOAX: 1.0 RCS5/FTSCOAX: 1.57
Colour/Finish	White RAL9016
Material	Steel
Mounting	Torsion springs
Cut-out, mm	RCS5/TCOAX: Ø160 RCS5/FTSCOAX: Ø164

RCS5/FTSCOAX is BS5839 Part 8 voice alarm compliant

EASE, CATT, ULYSSES and Architectural specifications are supplied on the disc inserted at the back of this folder

Manufacturer reserves the right to alter specifications without notice – March 2004

RCS5/TCOAX RCS5/FTSCOAX



• PEN5017 Firedome

This patented fire dome has been designed for ease of installation offering 1st and 2nd fit. The unique removable top plate on the dome comes complete with ceramic termination that enables the installer to make all cable connections on a flat plate rather than inside the frugal space offered on a standard fire dome. Once the cabling has been completed the supply line can be checked for continuity/earth faults without damaging the loudspeaker. The ceiling loudspeaker can be connected in the knowledge that the cables are sound.



Penton UK Ltd

Unit 2, Teville Industrials, Dominion Way, Worthing, West Sussex BN14 8NW England

Tel: +44 (0)1903 215315 Fax: +44 (0)1903 215415

E-Mail: sales@pentonuk.co.uk Website: www.penton.org