

# CLOCKAUDIO

## SPECIFICATIONS

<b>CA 100 AMPLIFIER</b>	
OUTPUT POWER	1.8W RMS Per Channel into 4 Ohms
DISTORTION	<0.5 THD
OPERATING CURRENT	1 Amp
QUIESCENT CURRENT	<50 mA
OUTPUT IMPEDANCE	4 - 8 Ohms
POWER SUPPLY	12 Volts DC
<b>CONTROLS</b>	
STAFF/VISITOR LOUDSPEAKER	Rotary Potentiometer
STAFF/VISITOR MICROPHONE	Rotary Pre-set
ANTI-FEEDBACK	On - Off Slide Switch
POWER	Latching Push Button with LED Indicator
<b>CONNECTIONS</b>	
AUDIO/CONTROL	2 - Way Screw Terminal Plugs
POWER	2.1mm DC Plug
<b>INDUCTION LOOP</b>	
FIELD STRENGTH	Conforms to BS 6803 Pt. 4 1981 Mean + 20 dB Maximum - 8 dB Ref 1A/m
AERIAL LOOP STRENGTH	0 - 16 Ohms Automatically Compensated
FINISH	All Modules finished Grey Nextel
DIMENSIONS (EXCLUDING CONTROLS)	90mm x 50mm x 110mm
<b>POWER SUPPLY UNIT</b>	
CSP 100	12V DC 1.6 Amp In-Line
<b>DIMENSIONS</b>	
SURFACE MOUNT	H W D
CML 100 MICROPHONE	75mm 60mm 98mm
CLS 100 LOUDSPEAKER	75mm 60mm 98mm
CMS 100 MICROPHONE	38mm 38mm 38mm
CSU 100 STAFF UNIT	70mm 100mm 155mm
FLUSH MOUNT	H W D BELOW DESK
CMF 100 MICROPHONE	2mm 65mm 120mm 45mm
CLF 100 LOUDSPEAKER	2mm 65mm 120mm 45mm
CSU 100 MICROPHONE (EXCLUDING CONTROLS)	1.5mm 75mm 185mm 45mm

# CLOCKAUDIO

9 Stratfield Park, Elettia Avenue, Waterlooville, Hampshire PO7 7XN  
Tel +44 (0)23 9225 1193 Fax +44 (0)23 9225 1201  
E-mail sales@clockaudio.demon.co.uk www.clockaudio.demon.co.uk



As part of a continuous product improvement programme, we reserve the right to alter specifications without prior notice.

# CLOCKAUDIO

## COMMUNICATOR

High quality speech through security  
windows and screens



PROFESSIONAL  
MICROPHONE  
SYSTEMS

## COMMUNICATOR



PROFESSIONAL  
MICROPHONE  
SYSTEMS



# COMMUNICATOR

## TWO WAY INTERCOM

### STAFF SECURITY AND CLARITY

The Clockaudio Communicator Full Duplex Two Way Communicator System is purpose is designed for use in situations where company staff need to be able to deal efficiently with visitors, whilst at the same time remaining totally secure.

Communicator has a wide range of applications and is especially ideal for use in areas where money transactions take place, where cash or other valuables are on view or where staff require a higher level than usual of personal safety. Communicator also allows staff to deal in an efficient and friendly way with visitors, without giving them actual access to inner parts of the building where such access may be inappropriate.

Communicator comprises of a range of professionally designed loudspeaker and microphone units, superbly styled to enhance any location. It is powered by a simple to operate, ruggedly built amplifier providing excellent speech clarity.

The Staff Speech Unit provides two way communication with visitors via a high quality gooseneck microphone and loudspeaker, all housed within a single unit. A staff mute switch also ensures that visitors are unable to hear the operator in confidential conversations.

The CA 100 Audio and Induction Loop Amplifier is the control centre of the Communicator and provides full open duplex communication.

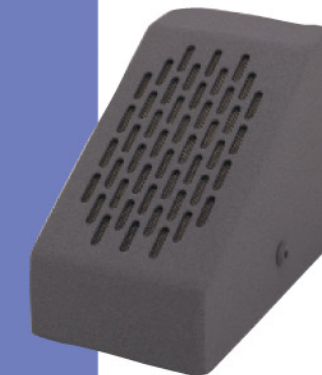


### CUSTOMER CONVENIENCE AND STYLE

The miniature microphone can be located in a number of positions to suit user requirements, usually either overhead or on the counter top.



The visitor enclosure can be used to house either a microphone or loudspeaker for visitors' use. It can be wall or counter top mounted and is well styled although its rugged construction ensures that it is long wearing and vandal resistant.



Visitor microphones and loudspeakers can alternatively be positioned in a housing which can be recessed into a wall or counter top, ideal for smoother styling and less intrusive positioning on busy counter tops and for providing additional protection from abuse.



Communicator is designed for use in Banks, Building Societies and Post Offices, Places of Public entertainment such as Theatres, Cinemas and Sports Grounds and 'at risk' establishments such as Garages, All Night Stores, Railway Ticket Offices and Taxis. Also recommended for Government Security locations and Local Authority Rent Payment counters etc.