

OmniCALL is the revolutionary new Emergency Voice Communication (EVC) system from Baldwin Boxall and is designed to provide reliable, secure and compliant communication in emergency situations.

Life Safety and Compliance

- Fully compliant with BS5839-9:2021 (UK Standard for EVC systems).
- Designed to meet BS8893:2024 (UK Standard for EVC systems), ensuring it meets stringent safety requirements.
- BS8300 compliance for toilet alarms and accessibility requirements.
- Designed for fire-resistant communication, enabling contact with disabled refuge points, fire wardens and emergency personnel during a fire or evacuation.

Modular and Scalable Design

- Easily expandable system – from small installations to large-scale buildings.
- Modular setup allows you to add handsets, refuge points or master panels as needed.

Clear Audio

- Provides full-duplex (Type A) and half duplex audio (Type B) for clear communication between master stations and remote units.

Versatile Integration

- Can support various types of EVC points: Disabled refuge, fire telephone, steward telephone and emergency assistance alarm systems (toilet and bedroom alarms).
- Suitable for retrofit or new build projects.
- Can utilise existing cabling for ease of installation.

Reliable and Easy to Maintain

- Built-in fault monitoring: automatic system checks and fault reporting make maintenance easier and reduce risk of unnoticed failures.
- Self-contained system with backup battery options for operation during power failure.

UK Made and Supported

- Designed and manufactured in the UK.
- Backed by Baldwin Boxall's strong reputation for customer support and long-term reliability with its' 7 year warranty.

Unparalleled Connectivity

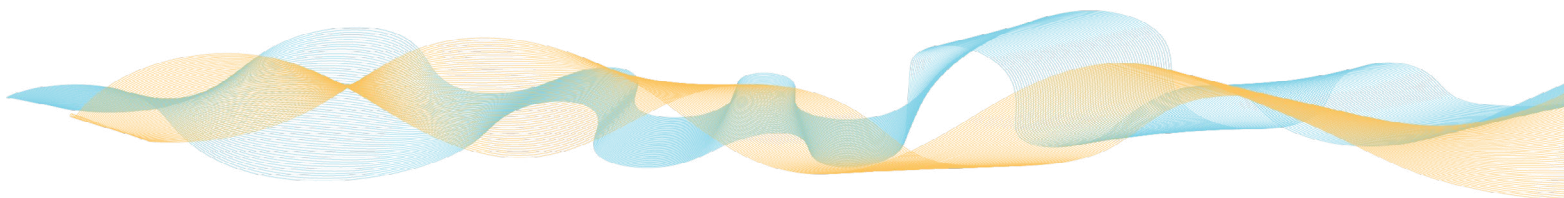
- Loop and radial technology in one system.
- Eliminates return loops where not required.
- No 200m rule.

Effortless Installation

- Non-polarity dependent connection.
- Avoids wiring mistakes and potential damage.
- 50% saving on installation time.

2-core cabling: Simplified Design & Wiring

- For loop and radials.
- Uses half the copper cable compared with existing 4-core loop systems.
- Reduces cable costs.



Reduced Power Consumption: A Step Towards Sustainability

- Eco-friendly with reduced power consumption.
- Up to 50% saving compared with existing systems.

Seamless Integration: Wiring Assistance Alarms Directly

- Allows direct wiring of Assistance Alarms into the outstation.

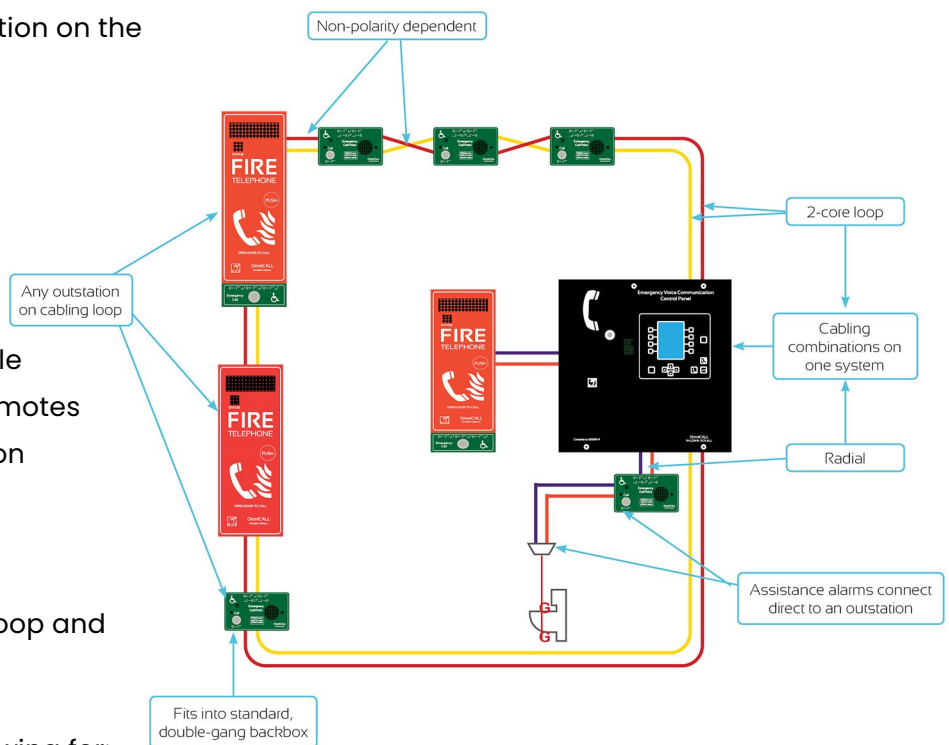
General System Features

- Loop and radial outstation connection on the same system.
- Loop connection:
 - 2-core fire rated cable
 - Polarity not important
 - 32 outstations per loop plus 32 Assistance Alarm kits (per 32 way loop)
 - Up to four loops per master console
 - No distance limitation between remotes
 - Total loop distance is dependent on number of outstations - max 1.5km.

Master Control Panel Benefits

- Flexible outstation connection, fix loop and radials to the master control panel
- Fully expandable with line cards
- 5" colour TFT for simplified use allowing for:
 - Customisable outstation layout
 - Active call list
 - Live faults view
 - Time and date stamped fault log
 - Time and date stamped activity log
 - Self-describing faults
 - Individual icon per outstation
 - Free text (two lines) for name and location of outstation
- Delayed call output if master station is unoccupied
- Up to 5 way conference call
- Ability to page all Type A and occupied Type B outstations.

- Radial Connection:
 - 2-core
 - Polarity not important
 - Up to 16 outstations plus 16 Assistance Alarm kits per master station
- Same outstation for loop or radial connection
- Assistance Alarm connection direct to outstation
- Each Assistance Call is a separate address
- Designed for BS5839-9 and BS8893 compliance



OCCPS

Type A Outstation Benefits

- Full duplex speech for clear audibility.
- Simple user operation, open door automatically makes a call.
- Luminescent text for ease of use in low lighting conditions.
- Optional beacon for enhanced visibility.
- Local speaker to allow master console to broadcast live speech announcements – All Call.
- Flush or surface mountable.
- Auto address during commissioning process.
- T-Coil in handset giving enhanced clarity for hearing impaired users.
- Self powered from loop or radial, so no local power required.
- Same device operates on either loop or radials, making ordering simple.



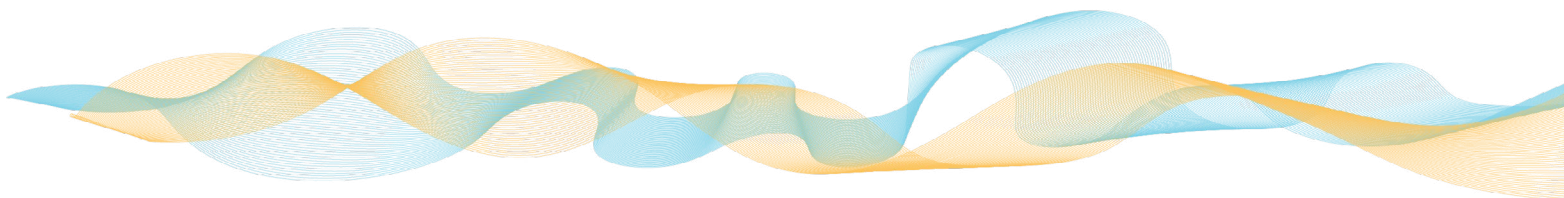
OCAFRP

Type B Outstation Benefits

- Standard double gang backbox design allows for quick and simple installation (flush or surface mountable).
- No bezel is required, reducing system cost when flush mounting.
- Provides two-way, hands free, speech steered communication, allowing the master control to take full control of the conversation.
- Braille compliant with BS8300 with locators.
- Luminescent text for ease of use in low lighting conditions.
- Easily resettable by a push button, no need to have additional key to reset.
- An optional link to the fire detection system prevents hoax disabled refuge calls.
- There is contact to allow a disabled assistance toilet alarm to be connected to the outstation which show as a separate indication on the control panel. This allows for simple system design, connection and installation savings.
- There is an interface for a monitored relay module to be used for local speaker isolation if required which prevents unwanted background noise to interfere when the unit is activated.
- Same device operates on either loop or radials making ordering simple.
- Self powered from loop or radial, so no local power is required.
- Flush mount backbox option can be supplied with appropriate fire stopping material if the outstation is to penetrate a fire barrier.



OCBRG



Type B Advanced Outstation Benefits

- Provides two-way, hands free, speech steered communication, allowing the master control to take full control of the conversation.
- Each unit has a built-in induction loop giving enhanced clarity for hearing impaired users which is compliant with BS5839-9.
- Braille compliant with BS8300 with locators.
- Luminescent text for ease of use in low lighting conditions.
- Easily resettable by a button push, no need to have additional key to reset.
- An optional link to the fire detection system prevents hoax disabled refuge calls.
- There is contact to allow a disabled assistance toilet alarm to be connected to the outstation which show as a separate indication on the control panel. This allows for simple system design, connection and installation savings.
- There is an interface for a monitored relay module to be used for local speaker isolation if required which prevents unwanted background noise to interfere when the unit is activated.
- Self powered from loop or radial, so no local power is required.
- Flush mountable via bezel.
- Retrofittable into both OmniCare and CARE2 standard disabled refuge backboxes and utilise existing cable.
- Same device operates on either loop or radials making ordering simple.



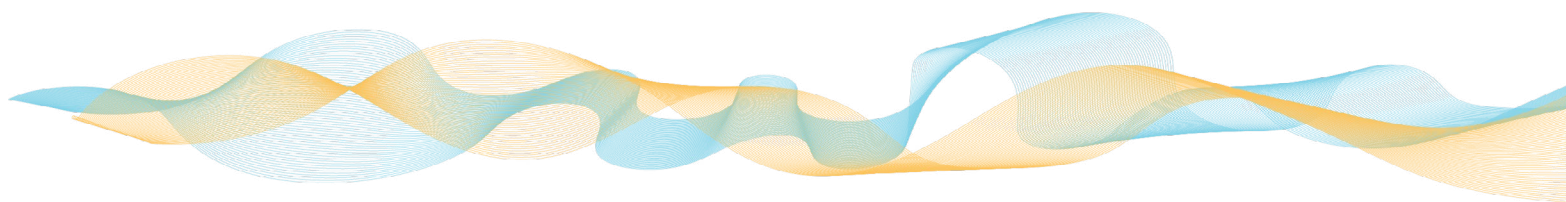
OCBARG

Type C Outstation Benefits

- The unit incorporates a full specification Fire Telephone and Standard Disabled Refuge outstation within the same housing allowing for a cost effective design and installation.
- The same unit operates on either the loop or radial system.
- The master control panel indicates if the incoming call originated from the Fire Telephone or Refuge sections for simple recognition of call type.
- Optional beacon for enhanced visibility.
- The units feature a red Fire Telephone section with a green Disabled Refuge Remote for full compliance to BS5839-9.
- There is contact to allow a disabled assistance toilet alarm to be connected to the outstation which show as a separate indication on the control panel. This allows for simple system design, connection and installation savings.
- Same device operates on either loop or radials making ordering simple.



OCCRP



Assistance Alarm Benefits

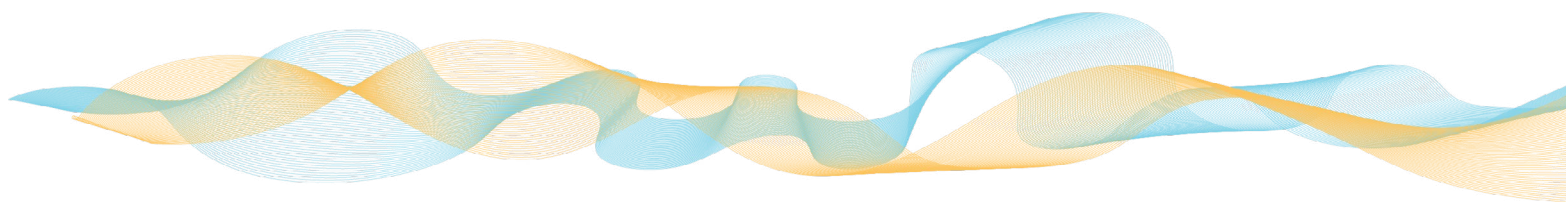
- Powered from the EVC system (no local power required).
- Call acknowledge feature.
- Monitored for faults and battery backed via the EVC system.
- IP65 certified products available for use in bathrooms.
- Ability to utilise up to four active devices (additional in the future) for bedroom systems.
- Fully conforms to BS8300-2:2018.



DTAKIT

Environmental Benefits

- TM65/DT65 data will be available showing carbon generated by the manufacturer of OmniCALL.
- By using two-core cable, the copper reduction compared with four-core systems is halved.
- It is possible to retro-fit OmniCALL to keep existing on-site cabling.
- Power savings of up to 50% compared with OmniCare.
- All packaging will be supplied using recycled material with no use of Etherfoam (future).
- Baldwin Boxall actively works to reduce its carbon footprint by:
 - Use of solar PV systems – total carbon reduction since installation is over 50 tonnes.
 - Move to EV vehicles for company cars.
 - Move to hybrid engineer vehicles.
 - LED lighting throughout the factory.
 - Carbon offsetting and support carbon reduction schemes.





BALDWIN BOXALL

LEADING THE WAY TO SAFETY

Baldwin Boxall Communications Ltd
Wealden Industrial Estate, Farningham Road,
Crowborough, East Sussex, TN6 2JR, United Kingdom
T: +44 (0) 1892 664422
E: hello@baldwinboxall.co.uk
W: www.baldwinboxall.co.uk